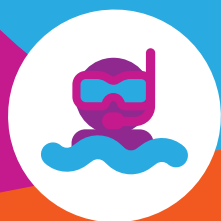




FOR YOUTH DEVELOPMENT®
FOR HEALTHY LIVING
FOR SOCIAL RESPONSIBILITY



BEST SUMMER EVER™



**CAMP SUMNER
PITTSFIELD, MA**

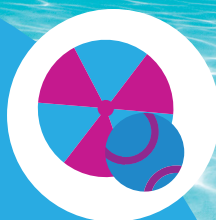
#BestSummerEver2018

**CAMP SUMNER
Berkshire Community College
Pittsfield, MA**

June 25 - August 24, 2018
Entering Grade K (Age 5) - Grade 8
\$180 per Camper per Week
bfymca.org

FOR MORE INFORMATION:

Carly & Krista
413-499-7650 x 121
schoolage@bfymca.org



FINANCIAL ASSISTANCE

NO COST BEFORE AND AFTER CARE

LEADERS IN TRAINING GRADES 6-8

TRADITIONAL SPORTS

S.T.E.A.M. ACTIVITIES

TEAM BUILDING

SWIMMING

ARTS & CRAFTS

LUNCH PROVIDED

FIELD TRIPS



WHY CHOOSE THE Y FOR YOUR CHILD'S BEST SUMMER EVER?

Our camp provides a safe place for kids where they will make new friendships, develop decision-making and problem-solving skills, learn about team building and much more. We provide parents with peace of mind knowing that their children are safe, having fun and learning new lifelong skills. We are committed to recruiting and developing an outstanding group of counselors and directors that are dedicated to providing the best possible camp experience. The staff participates in extensive training, and our lifeguards are certified. All staff members are certified in First Aid and CPR, as well as CORI checked. In addition, the health care administrator is on-site daily. Policies and procedures are available in the camp office. Camp Sumner in Pittsfield, MA must comply with regulations of the MA Department of Public Health and be licensed by the local board of health.

This is the
**BEST
SUMMER
EVER!**



OUR VALUES:
CARING HONESTY RESPECT RESPONSIBILITY

CAMP ACTIVITIES: STEAM, SWIM & SPORTS!

Our Pittsfield Summer Day Camp offers curriculum in STEAM (Science, Technology, Engineering, Art and Math). Activities include studying fossils, nature, weather, astronomy, dance, music and talent shows! YMCA counselors provide hands-on lessons focusing on science experiments creating volcanoes, galaxies in a bottle, exploring engineering using circuit boards, Legos and tower building with environmental resources. Our Leaders in Training (LIT) campers will lead an environmental-based Community Outreach Project with the support of the younger camp groups.

COMPLETE DETAILS:

- Download a copy of the Pittsfield Camp FAQ's and registration form at bfymca.org or stop by the Welcome Center at our Pittsfield branch, 292 North St., Pittsfield MA
- Financial Assistance forms available at bfymca.org or the Welcome Center
- Carly or Krista, Camp Managers: 413-499-7650 x 121, schoolage@bfymca.org